

# HP *CYLINDER REGULATORS FOR INDUSTRIAL GASES*



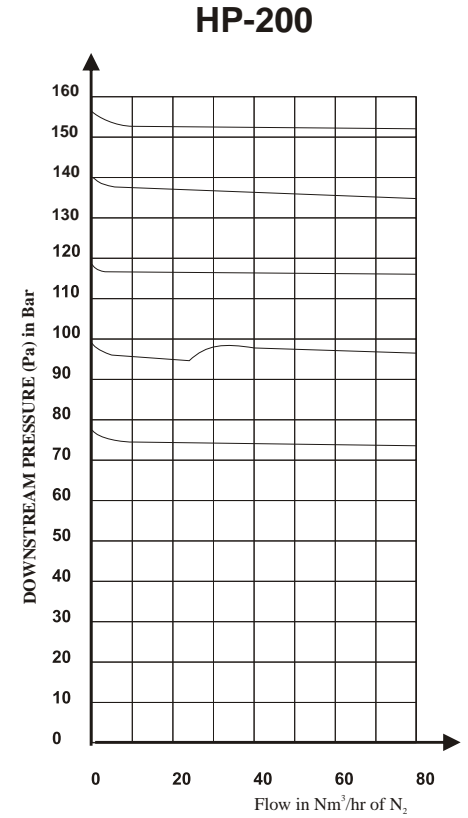
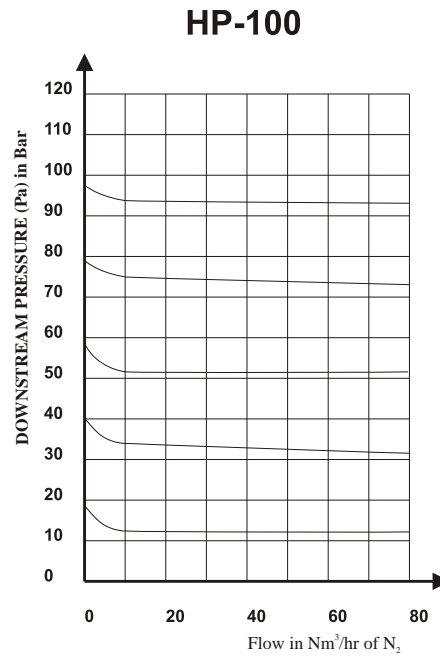
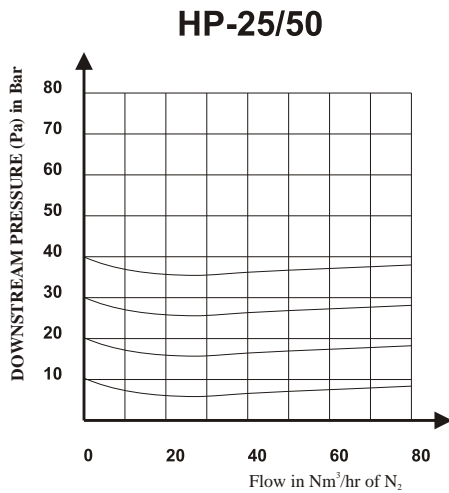
ROBUST REGULATOR WITH STAINLESS STEEL MEMBRANE (HP-25)  
SENSING ELEMENT OR PISTON (HP-50, 100, 200) (IN BRASS OR SS)  
DESIGNED TO ASSOCIATE HIGH FLOW RATES WITH HIGH PRESSURES IN  
HEAVY SERVICES, WITH BUILT-IN RELIEF VALVE.



**GASCAT**

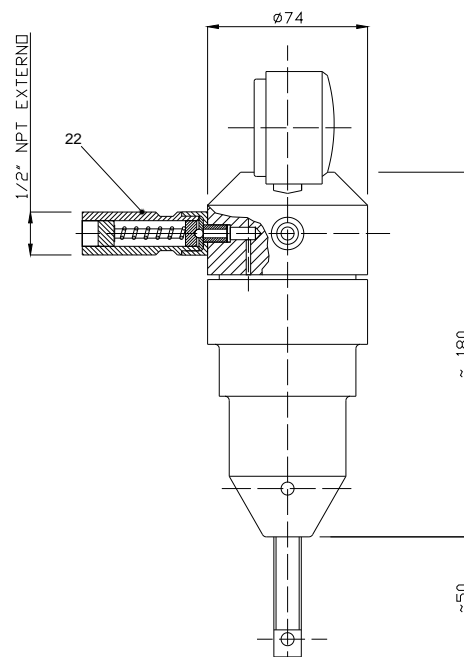
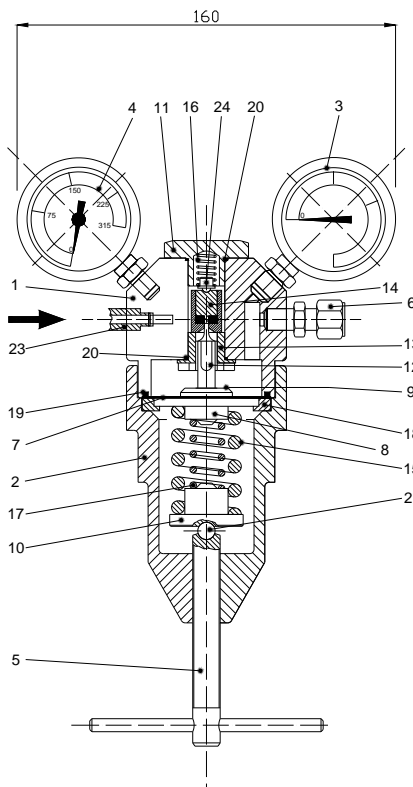


## Flow rate curves



Note: Upstream pressure 2 Pa + 1 bar (valid for HP-25/50/100)

## HP-25



POS.	MAINTENANCE
1	BODY
2	COVER
3	MANOMETER
4	MANOMETER
5	REGULATING SCREW
6	CONNECTOR
7	MEMBRANE
8	MEMBRANE DISK
9	STEM DISK
10	SPRING PLATE
11	PLUG
12	STEM
13	SEAT
14	SHUTTER SUB-SET
15	REGULATING SPRING
16	SHUTTER SPRING
17	REGULATING SPRING
18	MEMBRANE RING
19	O' RING
20	SEALING RING
21	BALL
22	RELIEF VALVE
23	CONNECTOR
23.1	O' RING
24	SPRING SEAT

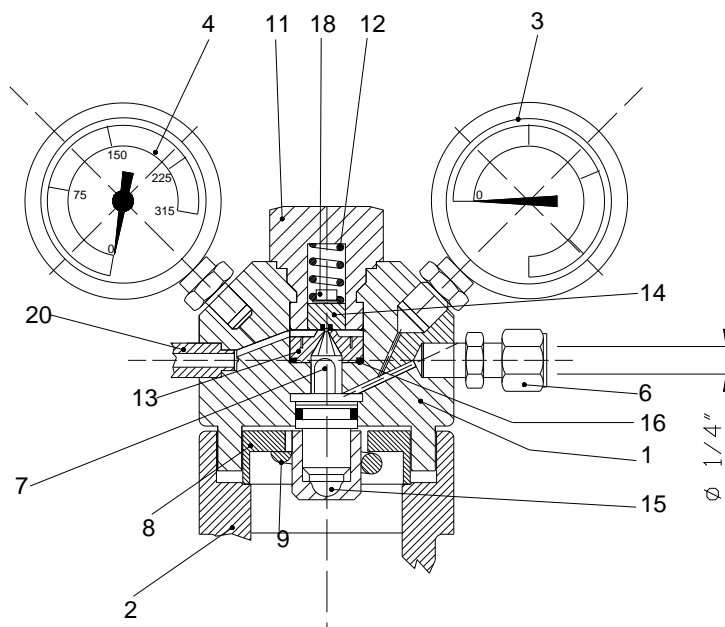
POS (positions) denoted with "\*" form the repair kit n° 19.13.D0.A0.00 - HP 25.

### MAINTENANCE

(Change of the replacement kit)

- Release the regulating screw (5)
- Release the cover (2)
- Remove parts (12), (9), (7), (8), (18), (15), (17) and (10)
- Release the plug (11)
- Remove parts (24), (16), (20) and (14)
- Release the seat (13)
- Remove the sealing ring (20)
- Make the necessary replacement
- Reassemble in inverse order

## HP-50/100



## HP-200

POS.	DENOMINATION
1	BODY
2	COVER
3	MANOMETER
4	MANOMETER
5	REGULATING SPRING
6	CONNECTOR
7	PISTON
8	SPRING GUIDE
9	REGULATING SPRING
10	SPRING SEAT
11	PLUG
12	SHUTTER SPRING
13	SEAT
14	SHUTTER SUB-SET
15	BALL
16	O' RING
17	O' RING
18	SPRING SEAT
19	RELIEF VALVE
20	CONNECTOR
20.1	O' RING

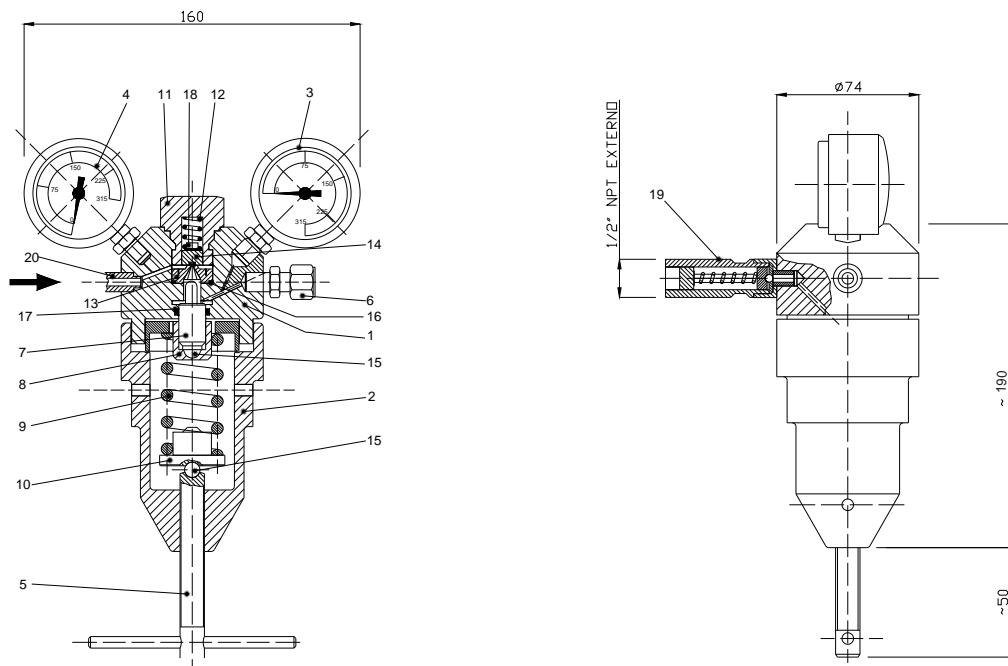
POS (positions) denoted with \* form the repair kits below:

N° 19.23.D0.A0.00 - HP-50  
 N° 19.33.D0.A0.00 - HP100  
 N° 19.43.D0.A0.00 - HP-200

### MAINTENANCE

(Change of the replacement kit)

- Release the regulating screw (5)
- Release the cover (2)
- Remove parts (7), (17), (8), (9) and (10)
- Release the plug (11)
- Remove parts (4), (18) and (12)
- Release the seat (13)
- Remove the O-ring (16)
- Make the necessary replacements
- Reassemble in inverse order



## InstalLaTION

It is advisable to conveniently purge the line before the regulator installation, in order to prevent the equipment bad functioning.

**Eventualities** - generally speaking, some 95% of the problems occurred with these regulators are caused by metallic particles that lodge themselves between the seat (13) and the shutter (14) due to the improper conditioning of the installation. In such case, verify the components (13) and (14) and, if they are not damaged, clean the parts and proceed according to instructions to change the kit, or request **GASCAT's** technical support.



### Head Office/Factory

Rodovia SP 73, nº 1141 - Bairro Pimenta

Indaiatuba - SP - CEP 13.347-390

Tel: (0 55 19) 3936-9300 - Fax: (0 55 19) 3935-6009

<http://www.gascat.com.br>

e-mail: [sales@gascat.com.br](mailto:sales@gascat.com.br)